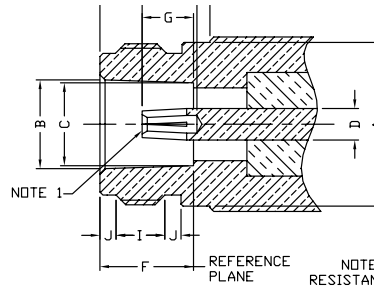


LETTER	INCHES [MILLIMETERS]	
	MINIMUM	MAXIMUM
A	.630 [16.00]	-
B	-	.330 [8.38]
C	.063 [1.60]	.066 [1.68]
D	.118 [3.00]	.124 [3.15]
E	.016 [0.41]	.060 [1.52]
F	.398 [10.11]	.412 [10.46]
G	.210 [5.33]	.230 [5.84]
H	.130 [3.30]	.170 [4.32]
I	.003 [0.08]	-
J	.158 [4.01]	.168 [4.27]
K	.177 [4.50]	.197 [5.00]



LETTER	INCHES [MILLIMETERS]	
	MINIMUM	MAXIMUM
A	-	.628 [15.93]
B	.336 [8.53]	.344 [8.74]
C	.316 [8.03]	.320 [8.13]
D	.118 [3.00]	.124 [3.15]
E	.422 [10.72]	-
F	.356 [9.04]	.362 [9.19]
G	.187 [4.75]	.207 [5.26]
H	.210 [5.33]	-
I	.172 [4.37]	.202 [5.13]
J	.047 [1.19]	.077 [1.96]

NOTE 1: I.D. TO MEET VSWR AND CONTACT RESISTANCE WHEN MATED WITH .063/.066 DIA. PIN

## SPECIFICATIONS

### PLATING

S - Silver

### PIN/CONTACT:

S - Silver

### DIELECTRIC MATERIAL

T - Teflon

### ELECTRICAL SPECIFICATIONS

**Impedance:** 50 Ω

**Working voltage rating:** 1,000 VRMS, Cable Dependent

**Frequency range:** 0-11 GHz

### MECHANICAL SPECIFICATIONS

**Mating:** 7/16 - 24 Threaded Coupling

**Interface:** MIL-STD-348, Section 304

**Cabling:** Solder



FIG. 1  
P2RFD-1670-2



FIG. 2  
P2RFD-1671-2



FIG. 3  
P2RFD-1672-2



FIG. 4  
P2RFD-1673-2

PHOTOS FOR REFERENCE ONLY, shown at 75%

PART #	FIG	DESCRIPTION	NOTES	PLATING		
				BDY	P/C	DIE
P2RFD-1670-2	1	ADAPTER	7-16 DIN MALE TO N MALE	S	S	T
P2RFD-1671-2	2	ADAPTER	7-16 DIN MALE TO N FEMALE	S	S	T
P2RFD-1672-2	3	ADAPTER	7-16 DIN FEMALE TO N MALE	S	S	T
P2RFD-1673-2	4	ADAPTER	7-16 DIN FEMALE TO N FEMALE	S	S	T